

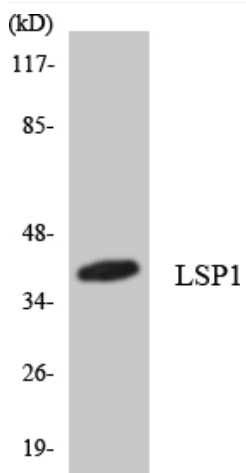


# LSP1 Polyclonal Antibody

<b>Catalog No</b>	YP-Ab-13943
<b>Isotype</b>	IgG
<b>Reactivity</b>	Human;Rat;Mouse;
<b>Applications</b>	WB;ELISA
<b>Gene Name</b>	LSP1
<b>Protein Name</b>	Lymphocyte-specific protein 1
<b>Immunogen</b>	The antiserum was produced against synthesized peptide derived from human LSP1. AA range:104-153
<b>Specificity</b>	LSP1 Polyclonal Antibody detects endogenous levels of LSP1 protein.
<b>Formulation</b>	Liquid in PBS containing 50% glycerol, 0.5% BSA and 0.02% sodium azide.
<b>Source</b>	Polyclonal, Rabbit,IgG
<b>Purification</b>	The antibody was affinity-purified from rabbit antiserum by affinity-chromatography using epitope-specific immunogen.
<b>Dilution</b>	Western Blot: 1/500 - 1/2000. ELISA: 1/5000. Not yet tested in other applications.
<b>Concentration</b>	1 mg/ml
<b>Purity</b>	≥90%
<b>Storage Stability</b>	-20°C/1 year
<b>Synonyms</b>	LSP1; WP34; Lymphocyte-specific protein 1; 47 kDa actin-binding protein; 52 kDa phosphoprotein; pp52; Lymphocyte-specific antigen WP34
<b>Observed Band</b>	37kD
<b>Cell Pathway</b>	Cell membrane; Peripheral membrane protein; Cytoplasmic side.
<b>Tissue Specificity</b>	Activated T-lymphocytes.
<b>Function</b>	function:May play a role in mediating neutrophil activation and chemotaxis.,PTM:Phosphorylated by casein kinase II, protein kinase C and MAPKAPK2. Phosphorylation by PKC induces translocation from membrane to cytoplasm. Phosphorylation by MAPKAPK2 may regulate neutrophil chemotaxis.,subunit:Binds actin.,tissue specificity:Activated T-lymphocytes.,
<b>Background</b>	This gene encodes an intracellular F-actin binding protein. The protein is expressed in lymphocytes, neutrophils, macrophages, and endothelium and may regulate neutrophil motility, adhesion to fibrinogen matrix proteins, and transendothelial migration. Alternative splicing results in multiple transcript variants encoding different isoforms. [provided by RefSeq, Jul 2008],
<b>matters needing attention</b>	Avoid repeated freezing and thawing!

**Usage suggestions**

This product can be used in immunological reaction related experiments. For more information, please consult technical personnel.

**Products Images**

Western blot analysis of the lysates from Jurkat cells using LSP1 antibody.